

Quick Start Guide



01 What's in the box

Please make sure you have everything included in the package.



Note
Product operation guide and download info, please find the Download Index file stored in the memory of BL-1000GT or scan below QR code, and you can read or install accordingly under internet connection.



02 Installing the Battery

- Remove the back cover by pushing the battery cover release tab with your thumbnail.
- Insert the battery, and align the battery contacts with the terminals in the battery compartment.
- Place the back cover over the battery compartment, and press it downward until it clicks into place.



03 Charging the BL-1000GT

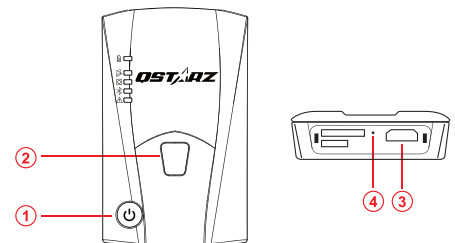
Please FULLY charge the BL-1000GT for the first time use by connecting the supplied Micro USB cable through computer or car's cigarette adaptor.



Note
Risk of explosion if Battery is replaced by an incorrect type. Dispose of used batteries according to the instructions.

- LED On: On Charging
- LED Off: Fully Charged

04 BL-1000GT Function buttons



- Power button:**
Press 3 seconds to power On/Off.
Press to show battery status. (Top to down each LED indicates 20%)
- POI (G Sensor calibration) button:**
Press to record point of interest.
Press & hold 1 second to calibrate g-sensor.
- Micro USB Jack:**
Device Charging / Downloading / Updating firmware.
- Reset Button:**
Shut down the device. (Inside the rubber cover)

05 LED Indicators

LED symbol	LED Color	Status	Description
	Orange	Flashing	Low Power
	Green	On	Recharging
	Off	N/A	1. Fully charged 2. Device power off or sleep mode
	Orange	Flash 3 times	POI pressed , POI(Point of Interest) is recorded
	Orange	Flash per 2 sec	Low memory (less than 20% left or the records more than 21,600 files)
	Orange	On	Memory is full / SD card error/ the records more than 21,600 files
	Off	N/A	1.Memory has adequate capacity 2.Device power off or sleep mode
	Green	On	GPS position is fixed, device is logging
	Off	N/A	1.GPS position not fixed 2.Memory is full 3.Device power off or sleep mode
	Blue	Flash	Searching for device
	Blue	On	Bluetooth connected
	Orange	On	1.GPS is not connected with satellite 2.Memory is full
	Orange	Flash	Device enter into sleep mode
	Off	N/A	1.GPS position is fixed 2.Device power off

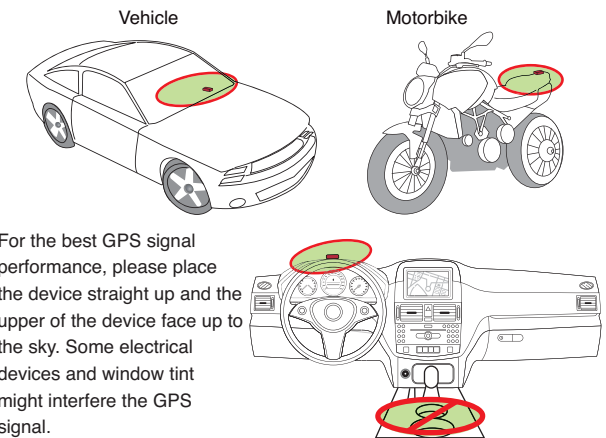
06 Beep Code

* Beep can be turned off from software -> Config GPS.

Status	Beep code	Description
Power On	1 short beep	One short beep when device switch On.
Power Off	1 long and short beep	One long and short beep when device switch Off.
GPS fixed	2 short beep	2 short beep when GPS location is fixed.
POI button	3 short beep	3 short beep when POI button being pressed.
Memory Full	3 long beep	3 long beep when the device is out of memory.
Sleep mode	1 long and 1 short beep	1 long and then 1 short beep when the device enters sleep mode.
Memory error	Long continuous beep	Micro SD Card error or is not detected.

07 Mount the BL-1000GT on Car or Motorcycle

Best location to mount your BL-1000GT.



For the best GPS signal performance, please place the device straight up and the upper of the device face up to the sky. Some electrical devices and window tint might interfere the GPS signal.

08 Acquiring Satellite Signal

- Hold the Power button 3 seconds to power on BL-1000GT.
- Place the device outside under clear view of sky to acquire GPS signals.
- Acquiring GPS signals may take few minutes. The GPS LED is solid green when it starts logging data. The GPS LED flashes green when it has connected when GPS satellites.

09 Product Compatibility

- BL-1000GT is compatible with most iOS and Android devices except neutral brand or the newest phones. You can verify the compatibility via Qstarz BLE GPS View App.

* Download the Qstarz BLE GPS View APP on App Store or Google Play Store.

10 Set up / Firmware Update

- All function must be set up before use as following: time zone, start recording time, Bluetooth and Buzzer enabled.
- Download and extract the firmware from Qstarz web site: <http://racing.qstarz.com/Products/BL-1000GT-FirmwareUpdate.html>. If you need to update the Bootloader, please also download the latest Bootloader file.
- Power off BL-1000GT and connect with computer via Micro USB cable.
- Copy the firmware file "FW.qst" and Boodloader file "BL.qst" to the root directory of BL-1000GT Micro SD card.
- After copying, please select Safely Remove Hardware and Eject Media (QSTARZ BL-1000GT) in Windows operating system.
- Unplug the Micro USB cable, and firmware update will begin automatically. LEDs will flash in sequence during the update process.
- Once firmware update is completed, the device will turn off automatically. Do not shut down or power off during the update process.

Note
The failure of the firmware update will cause the device irreparable damage. Before update the latest firmware, please make sure that the battery capacity is over 50% and the back cover is installed.

11 Product Specifications

- Adopt high sensitivity GNSS chip and 3-axis accelerometer
- Bluetooth LE 4.0 enabled device
- Log rate up to 10Hz excellent for High speed racing (recording 1 waypoint per 0.1 second)
- POI button design to record your point of interest immediately
- 5 LED indications to view device status
- Case: Rugged, but not water-resistant
- Power Supply: Rechargeable Lithium-Ion battery, 20 hours operation (typical use)
- Temperature: Operating -10~60°C / Charging 0~45°C / Storage -20~60°C



12 QRacing APP (iOS version and Android version)



QRacing APP is a racing data analysis APP combining logged data with video overlay support. You can download QRacing APP on App Store or Google Play according to your phone model. To start using QRacing App, make sure to register a QWS account and complete account activation first.

* Supported versions please refer to Qstarz website.

③ Start QRacing APP on your Mobile Phone

Register a new account and complete account activation. Login and tap GO  page & click "Connect  " symbol on the right-top. Select to add your BL-1000GT new device, and bind with your phone for the first time use.

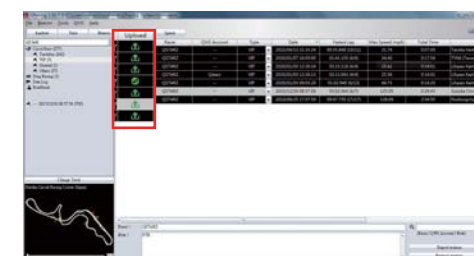


14 Install QRacing PC Software

To advanced analyze your logged racing data you can install PRO QRacing PC software. Power off your BL-1000GT device and connect it with Computer, and browse the root directory of BL-1000GT in My Computer. Find the "Download Index_BL-1000GT.html" file and click it with internet connection. A download webpage will pop-up, then click on the link and follow the on screen steps to install QRacing software and read related information. Once you completed QWS registration, login QRacing Web (<https://qws.qstarz.com>) to request your QRacing PC software key online. For the first time use of QRacing PC software, you must enter software key. The key then will be stored in your QWS account. Scan the QR code to read the instruction.



- * QRacing lap timing analysis software is for PC Windows OS only.
- * Read log to QRacing PC software, please make sure to turn off your BL-1000GT first.



Select sessions to upload to QRacing Web for backup and join ranking your result with global users.

Note

If you do logging with BL-1000GT without running QRacing App, you can read log from QRacing PC software and upload data to QRacing Web then will sync results to QRacing App.

* Read the detail operation on QRacing User Manual: Click Help > Users Manual

13 Start Racing with QRacing App

* The mobile phone is illustrated by iPhone only.

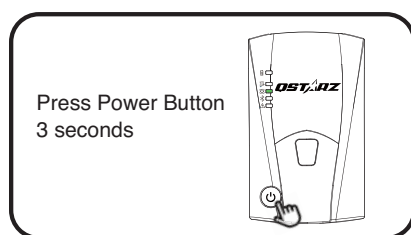
* Turning ON your mobile device's Bluetooth feature.

-iPhone Setting > General > Bluetooth > On

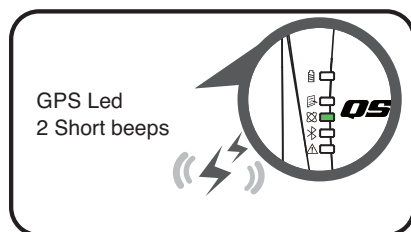
-Android phone Settings > Wireless & Networks > Bluetooth: On

① Switch On BL-1000GT

Please switch on BL-1000GT power and confirm Bluetooth of LED flashing for connection.



② Confirm GPS gets fix. BL-1000GT will start to log once GPS get fixed.



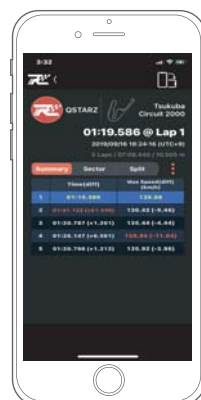
Note

When BL-1000GT power off, it will go to data-saving process before shut-down.

④ Start to real-time Racing and record your sessions.

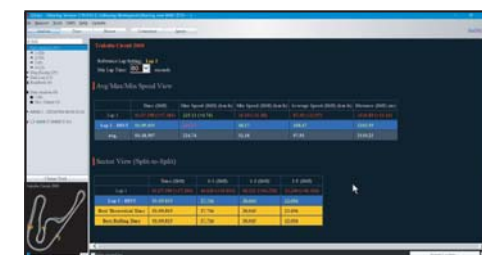
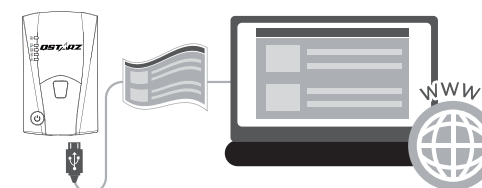


⑤ View, compare or rank your analysis Data on QRacing APP. And will auto sync to QRacing Web cloud platform.



Note

Picture screens might be slightly varied according to different APP version.



QRacing will detect trackmap automatically and do advanced data-analysis.



QRacing beacon editor to set start/finish line, adjust trackmap, or import/export beacons. View lap timing in graph analysis and support playback up to 3 laps.

15 Product Care

- Please take out the battery and store it in dry/cool places when not use for a long period.
- If the device isn't used in temperature between -10°C ~ 60°C, its battery charging capability will decrease.
- Leave the device far from heat or high temperature environment. And also, do not expose your device in temperature higher than 145 °F/60°C to prevent the inside battery from overheating, exploding or burning itself. The Lithium battery inside the device should be recycled.
- Do not attempt to open the device by yourself. Unauthorized hacking may damage the unit, and void your warranty.
- Micro SD Card error: If you encounter this error, please take micro SD card reader and plug-in your micro SD card. Use "SD Card Formatter v5.0" tool to execute Quick format to FAT32 format.

Declaration of Conformity



Qstarz International Co., Ltd. address at 6F-2, No. 160, Sec. 6, Ming Chuan E. Rd, Taipei, Taiwan, hereby declares that the radio equipment model BL-1000GT GPS Racing Recorder is in compliance with Directive 2014/53/EU.

The full text of the EU declaration of conformity can be found at the following web page:

<http://racing.qstarz.com/Download.html#doc>