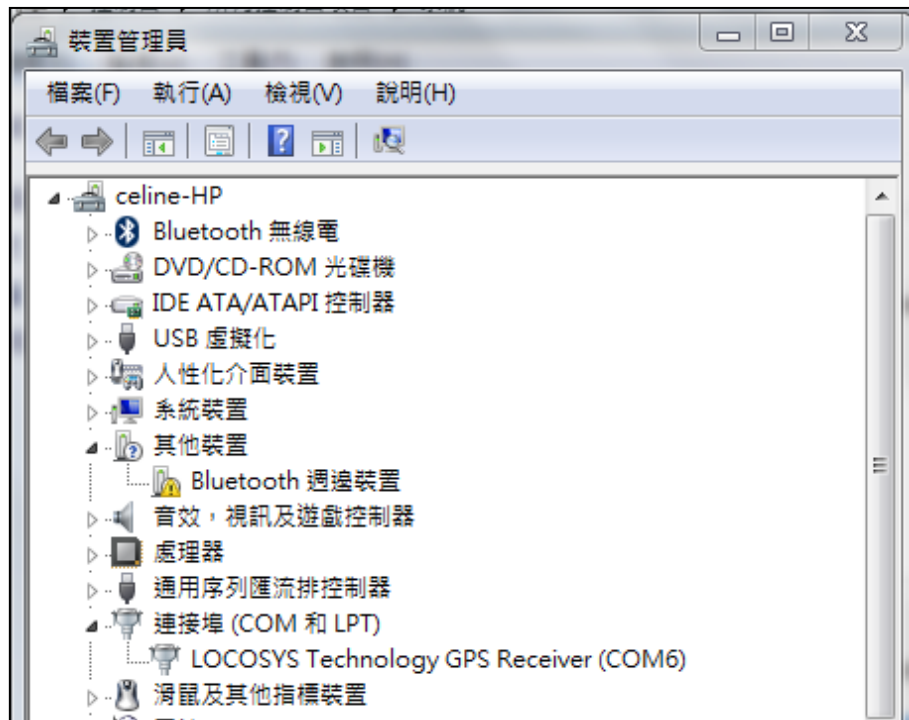


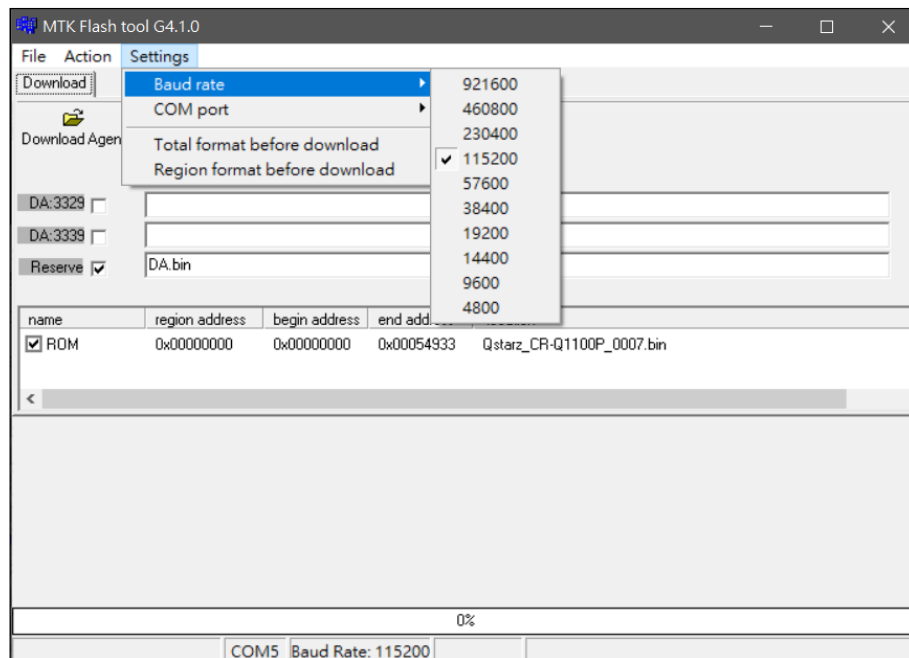
Update CR-Q1100P firmware procedures

1. Using FlashTool.exe

- 1-1. Turn on Q1100P and connect Q1100P to computer with USB cable
- 1-2. Check your COM port of Q1100P in “Device Manager” of your computer



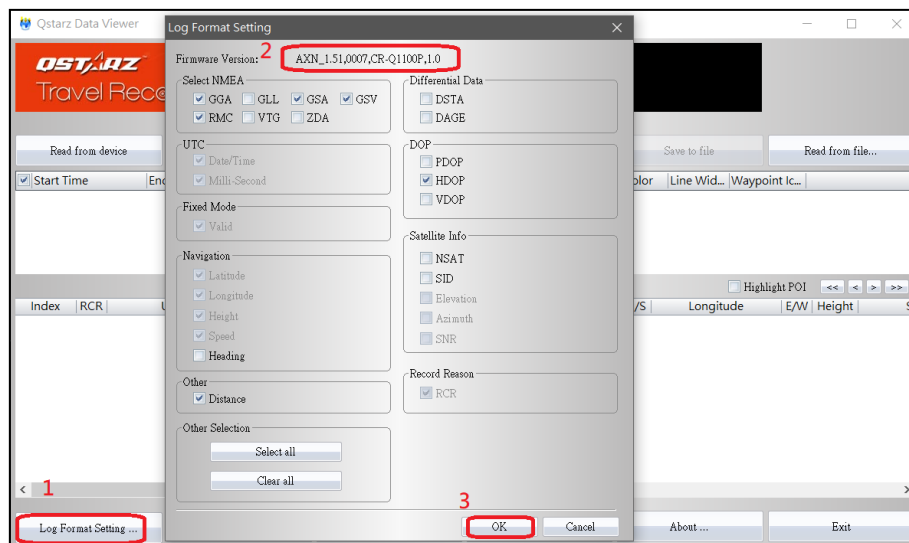
- 1-3. Open Flash Tool program and click on Comport, select the com port as you get from last step, select Baud rate as 115200



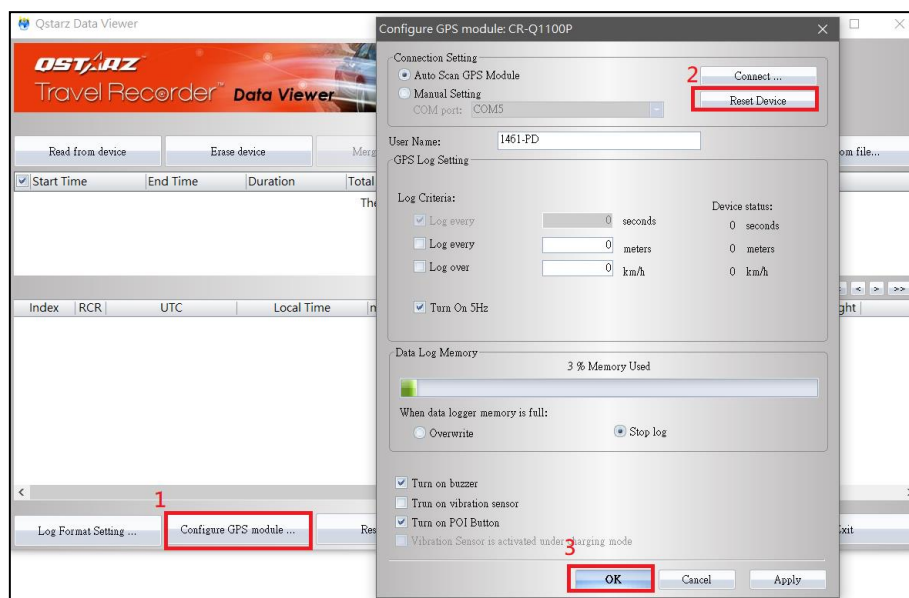
- 1-4. Double check Download Agent is: **DA.bin** and ROM is **Qstarz_CR-Q1100P_0007.bin**, if NOT, select the correct file.

1-7. Using Qstarz Data Viewer to check firmware version

Open DataViewer program, click on **Log Format Setting**, make sure the firmware version is **AXN_1.51,0007,CR-Q1100P,1.0**

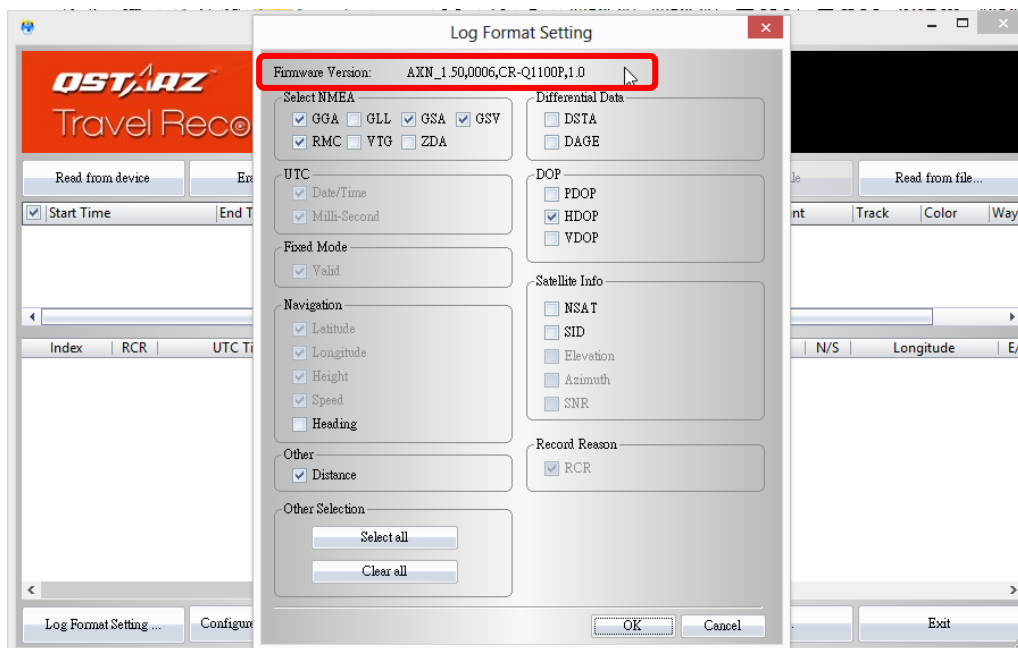


1-8. Click on **Configure GPS Module** and **Reset** the device to complete the firmware update.



2. Using Qstarz Data Viewer

4-1. Open DataViewer program, click on **Log Format Setting**, make sure the firmware version is **AXN_1.50,0006,CR-Q1100P,1.0**



4-2. Click on **Configure GPS Module** and **Reset** the device to complete the firmware update.

